

Environmental Settings of Non-formal Schools in Mukuru



Saori Imoto (The University of Tokyo)
+ Muungano Support Trust + Muungano Wa Wanavijiji

September 2012

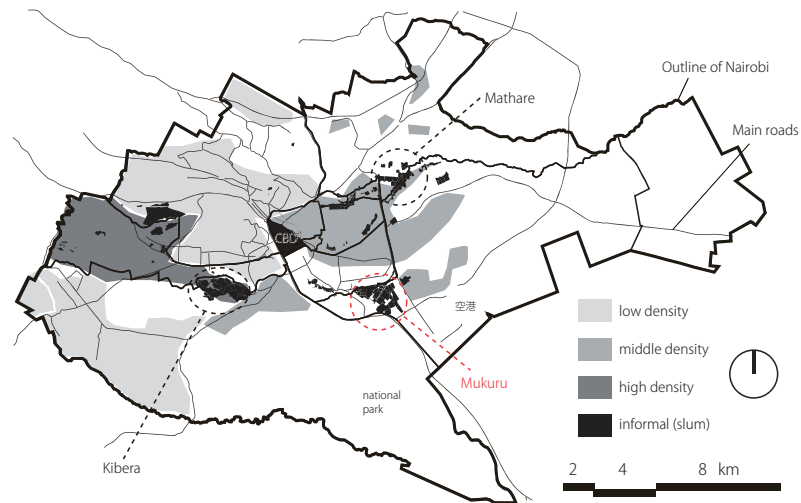
Introduction

This booklet introduces an environmental settings Non-formal schools in Mukuru. The source of this documents are survey in 2012, which interview , measurement and observation survey had done in 2012.

Contents

- ❶ School Profile
- ❷ Findings from Non-formal School observation
 - Outline of Non-formal Schools
 - Spatial Environment of Non-formal Schools
 - Some attempts for improvement of spatial environment

List and Location of Non-formal Schools surveyed



Map of Nairobi

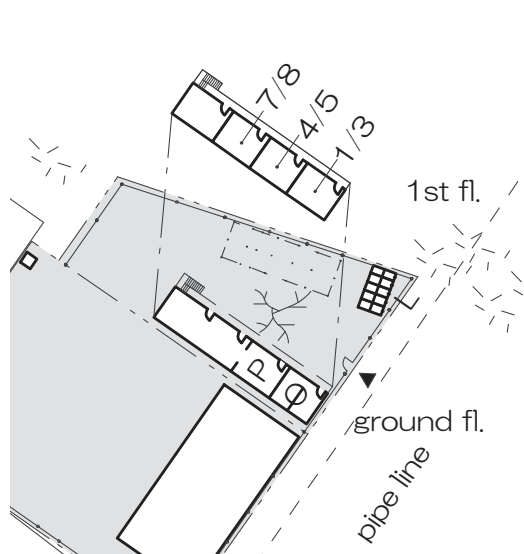


Map of Mukuru / Location of Schools

Schools visited

Reuben Vision / Great Hope Community Center / Emmanuel Academy / Green View Academy / Jaombi Community Foundation Education Centre / Joyland Academy / New Dawn Academy / Jovial Community Education School / NIEC Academy / REFACO Learning Center / Stevens Academic Community Centre / Happy Promotion / Kwa Njenga Needy / Glorious Land Academy / Reuben Baptist Academy / Betterlife Community School / St. Anthony Learning Center / Mukuru Menno Academy / St. John's Junior School Center / Neema Community Education Centre / Briton's Community and Orphanage Camp / Utu Wema Community School / Sico Education Centre / St. Casper Academy / Njokim Top Junior / Rapture Community School

Jovial Community Education School



- School Information (2012)
1. Established in 2004
 2. Owning structures
 3. Classrooms : Temporary Structure
 4. Site area: 440m²
 5. Total floor area : 140m²
 6. Number of pupils ; 92
 7. Number of teachers : 6
 8. Registered by Min. of Socila Development



facade and paintings of classrooms



classrooms

greens

Great Hope



- School Information (2012)
1. Established in 2006
 2. Owning structures
 3. Classrooms : Temporary Structure
 4. Site area: 160m²
 5. Total floor area : 45m²
 6. Number of pupils ; 231
 7. Number of teachers : 6



looking down the site

nursery classroom under tent



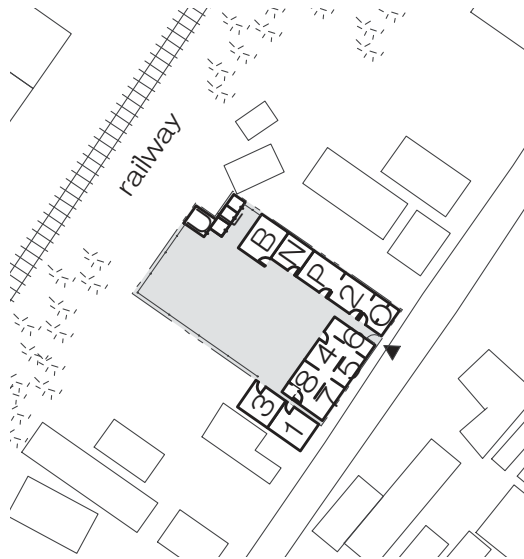
std.1-2 classroom

std.7 classroom

office

std.5-6classroom

Emmanuel Academy



School Information (2012)

1. Established in 2003
2. Owning structures + Renting rooms
3. Classrooms : Temporary Structure
4. Site area: 310m²
5. Total floor area : 125m²
6. Number of pupils ; 243
7. Number of teachers : 8
8. Registered by Min. of Social Development



playground

latrine

office

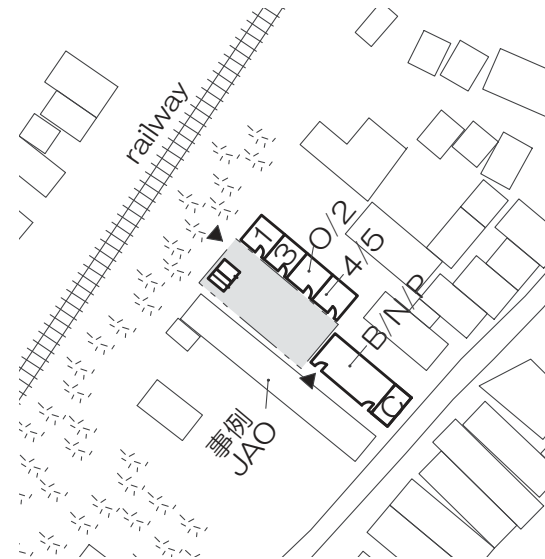


baby classroom

std.4 classroom

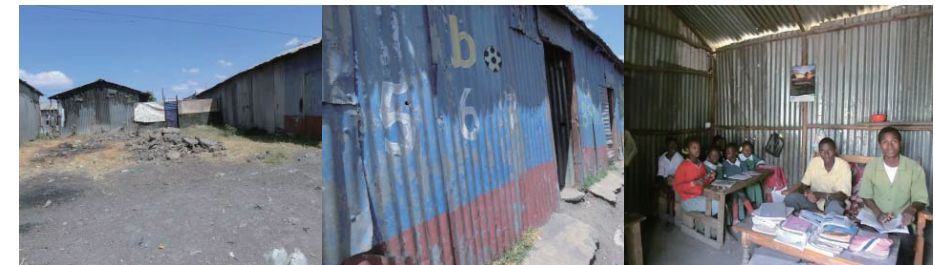
std.8 classroom

Green View Academy



School Information (2012)

1. Established in 2007
2. Owning structures + Renting rooms
3. Classrooms : Temporary Structure
4. Site area: 75m² (Owned area)
5. Total floor area : 70m²
6. Number of pupils ; 91
7. Number of teachers : 4
8. Registered by Min. of Social Development



playground

wall painting

std.2 classroom

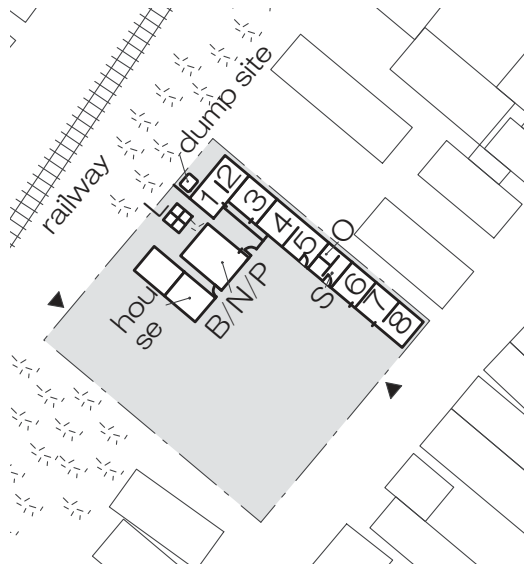


nursery classroom

std.1 classroom

std.3 classroom

Jaombi Community Foundation Education Centr



School Information (2012)

1. Established in 2008
2. Owning structures
3. Classrooms : Temporary Structure
4. Site area: 750m²
5. Total floor area : 113m²
6. Number of pupils ; 144
7. Number of teachers : 8
8. Registered by MIn. of Social Development



facade of classrooms

staff room

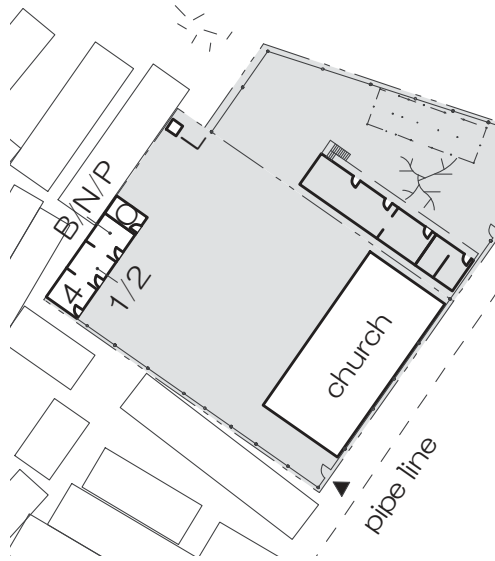
during the class



during breaktime

collecting gabages before breaktime

NIEC Community



- School Information (2012)
1. Established in 2000
 2. Owing structures
 3. Classrooms : Temporary Structure
 4. Site area:770m²
 5. Total floor area : 45m²
 6. Number of pupils ; 40
 7. Number of teachers : 3
 8. Registered by MIn. of Social Development



facade of classrooms

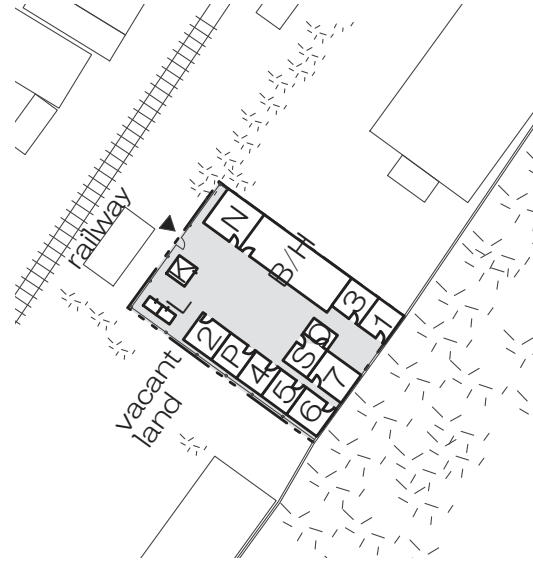
office

digging for latrine



classrooms

REFACO Learning Center



- School Information (2012)
1. Established in 2008
 2. Owing structures
 3. Classrooms : Temporary Structure
 4. Site area:350m²
 5. Total floor area : 142m²
 6. Number of pupils ; 330
 7. Number of teachers : 12
 8. Registered by MIn. of Social Development



facade of classrooms

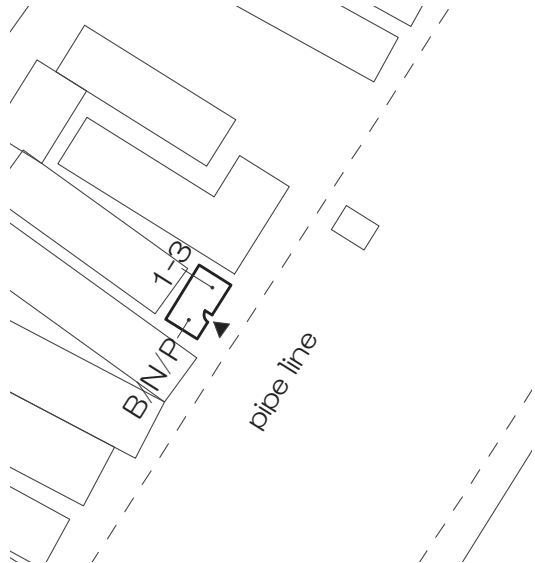
play ground



kitchen

classrooms

Happy Promotion Centre



- School Information (2012)
1. Established in 2009
 2. Renting a room
 3. Classrooms : Temporary Structure
 4. Site area:-m²
 5. Total floor area : 23m²
 6. Number of pupils ; 34
 7. Number of teachers : 1



facade



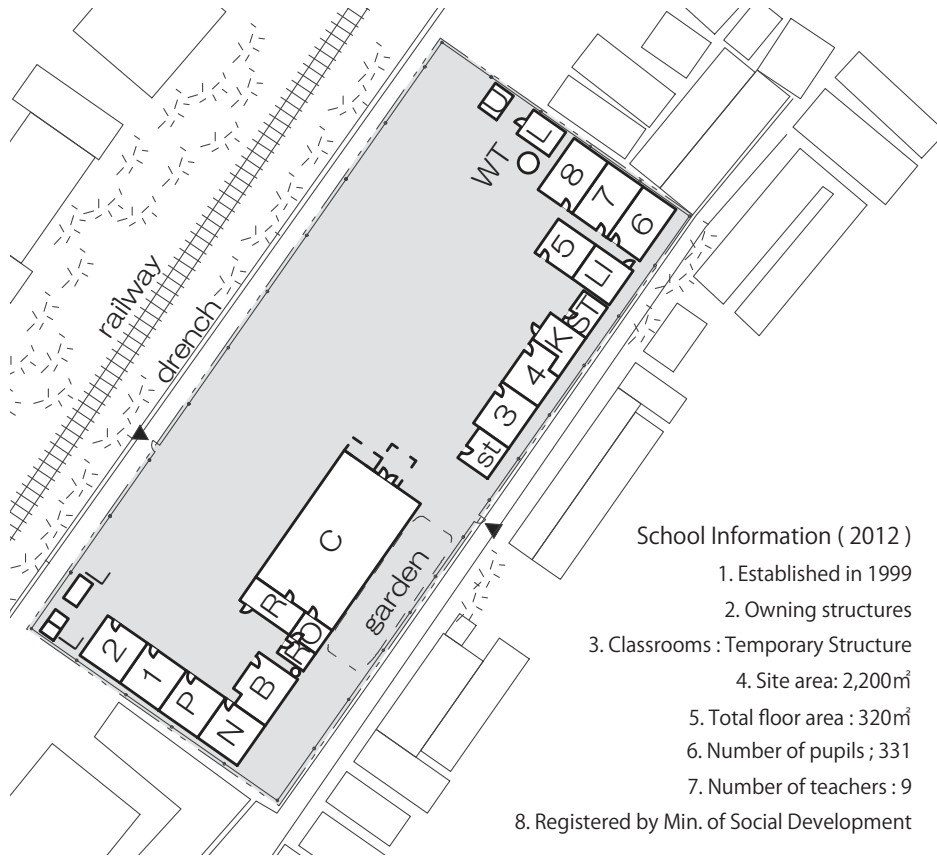
inside and outside the classrooms



environment around teacher's house as temporary classroom



Kwa Njenga Needy



church

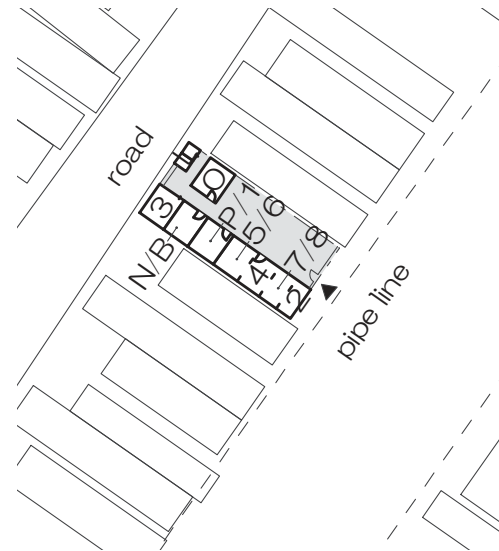


classrooms and playground



inside the classroom

Joyland Academy



classrooms

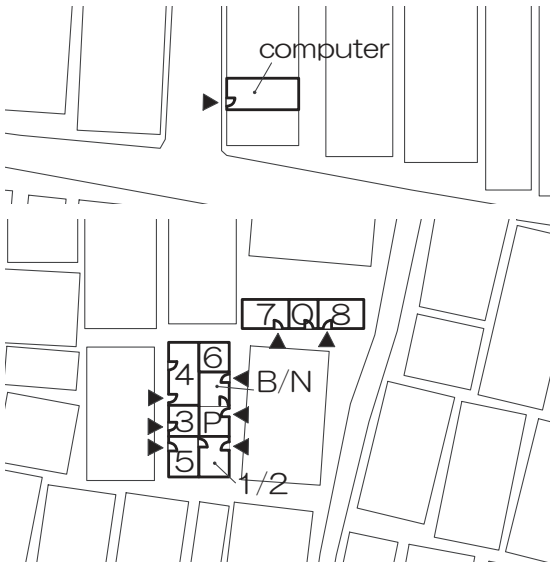


infront of the school



entrance of classrooms

Betterlife Community School



School Information (2012)

1. Established in 2001
2. Owning structures + renting rooms
3. Classrooms : Temporary Structure
4. Site area: 85m² (owned area)
5. Total floor area : 137m²
6. Number of pupils ; 424
7. Number of teachers : 15
8. Registered by Min. of Social Development



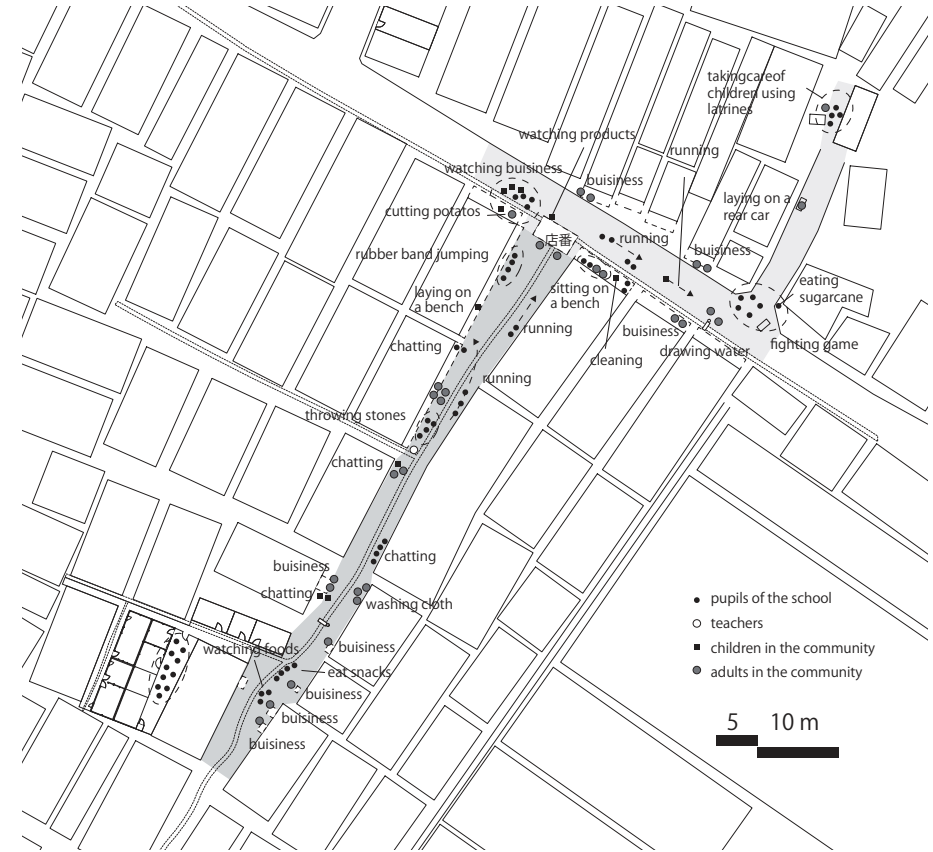
computer room



classroom



classrooms



children playing on the roads



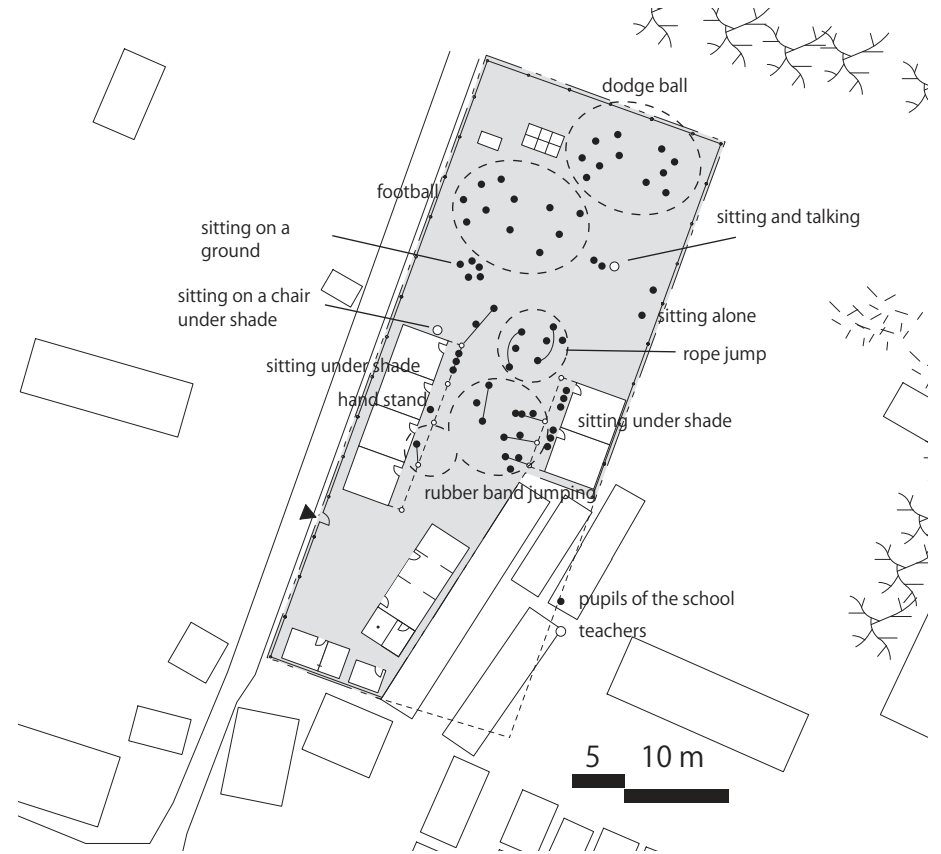
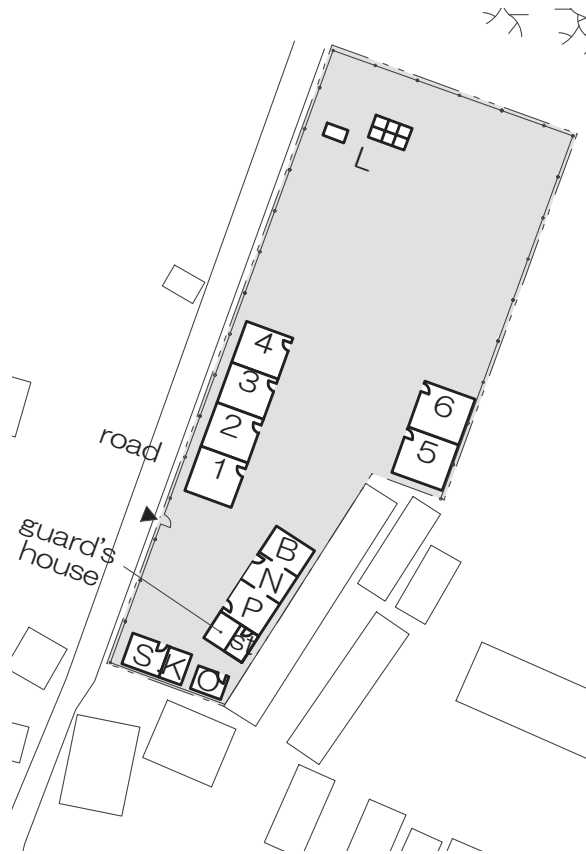
rental latrine



Mukuru Menno Academy

School Information (2012)

1. Established in 2005
2. Owning structures
3. Classrooms :
Temporary Structure + Permanent Structure
4. Site area: 1,400m²
5. Total floor area : 240m²
6. Number of pupils ; 272
7. Number of teachers : 10
8. Registered by Min. of Social Development



facade of classrooms

garden

classrooms



pupils play at playground

St. John's Junior School Center



School Information (2012)

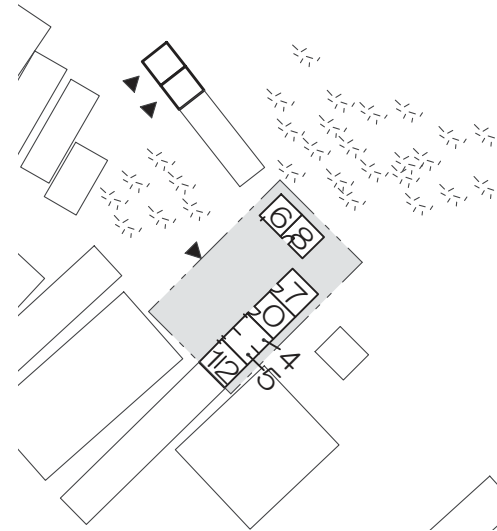
1. Established in 2004
2. Owning structures + renting rooms
3. Classrooms : Temporary Structure
4. Site area: 80m² (owned area)
5. Total floor area : 120m²
6. Number of pupils ; 148
7. Number of teachers : 9
8. Registered by Min. of Social Development



playground

classrooms

Briton's Community and Orphanage Camp



School Information (2012)

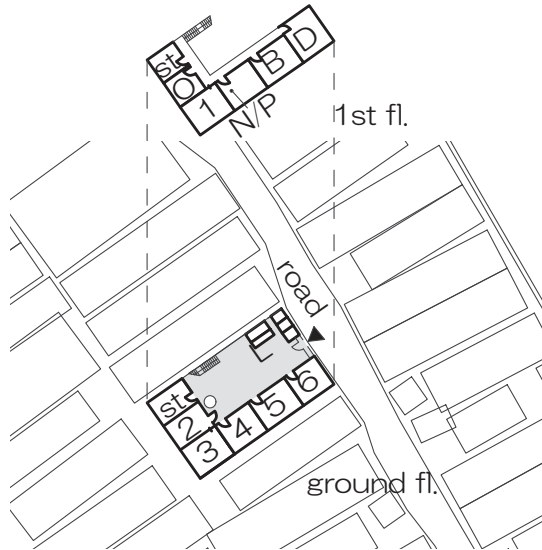
1. Established in 2006
2. Owning structures + renting rooms
3. Classrooms : Temporary Structure
4. Site area: 210m² (owned area)
5. Total floor area : 80m²
6. Number of pupils ; 165
7. Number of teachers : 9
8. Registered by Min. of Social Development



facade of classrooms

classrooms

Utu Wema Community School



School Information (2012)

1. Established in 2009
2. Owning structures
3. Classrooms : Temporary Structure
4. Site area: 150m²
5. Total floor area : 80m²
6. Number of pupils ; 238
7. Number of teachers : 10
8. Registered by Min. of Social Development



entrance

latrines

facade of classrooms

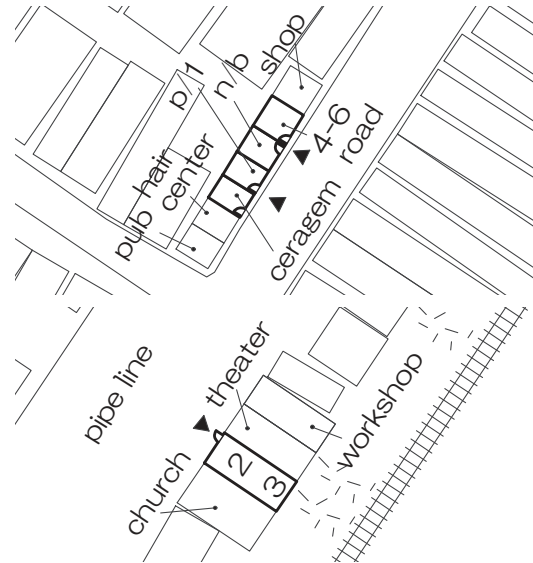


classrooms

playground

adult education

Sico Education Centre



School Information (2012)

1. Established in 2003
2. Owning structures + renting rooms
3. Classrooms : Temporary Structure
4. Site area: 30m² (Owning areas)
5. Total floor area : 54m²
6. Number of pupils ; 158
7. Number of teachers : 5
8. Registered by Min. of Social Development



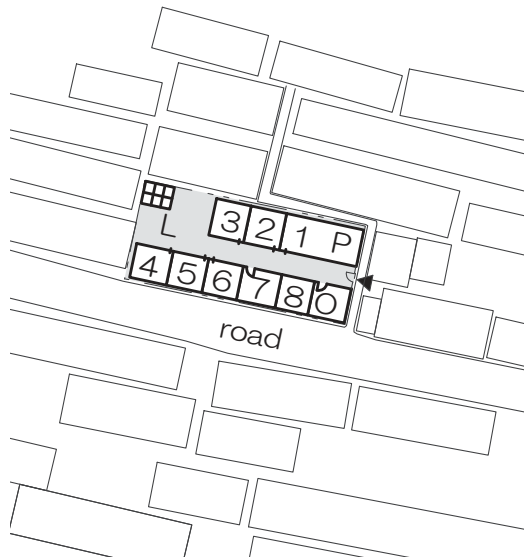
facade of classrooms

children playing on the road



classrooms

St. Casper's Academy



- School Information (2012)
1. Established in 2003
 2. Owning structures
 3. Classrooms : Temporary Structure
 4. Site area: 220m²
 5. Total floor area : 130m²
 6. Number of pupils ; 54
 7. Number of teachers : 6
 8. Registered by Min. of Social Development



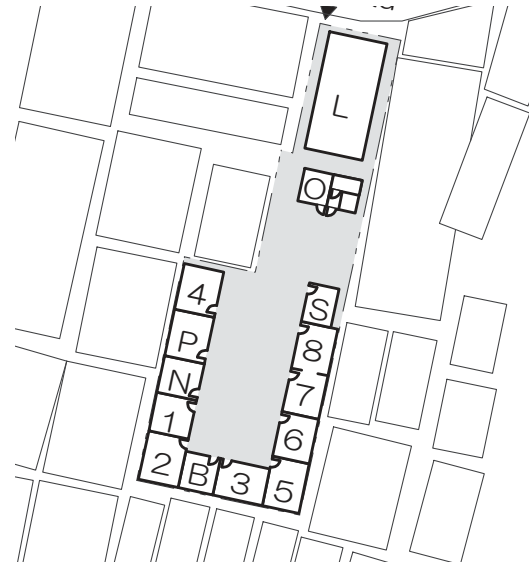
entrance of the school

latrine



classrooms

Reuben Vision School



- School Information (2012)
1. Established in 2007
 2. Owning structures
 3. Classrooms : Temporary Structure
 4. Site area: 590m²
 5. Total floor area : 220m²
 6. Number of pupils ; 551
 7. Number of teachers : 14
 8. Registered by Min. of Social Development



classrooms and playground

office

window



nursery classroom

std.2 classroom

std.6 classroom

Outline of Non-formal schools

Establishment of Non-formal schools

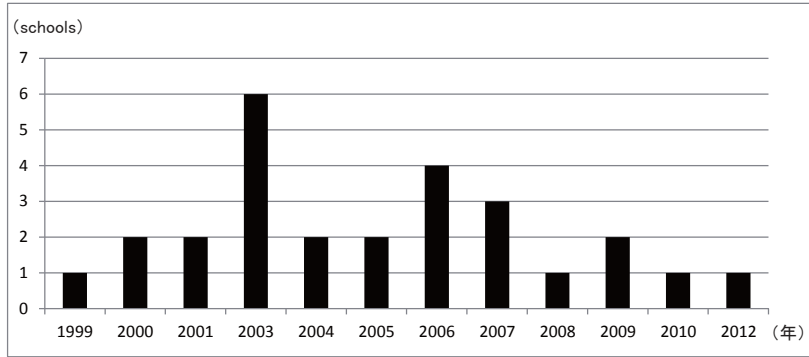


Fig. when Non-formal schools are established

Moves of Non-formal schools

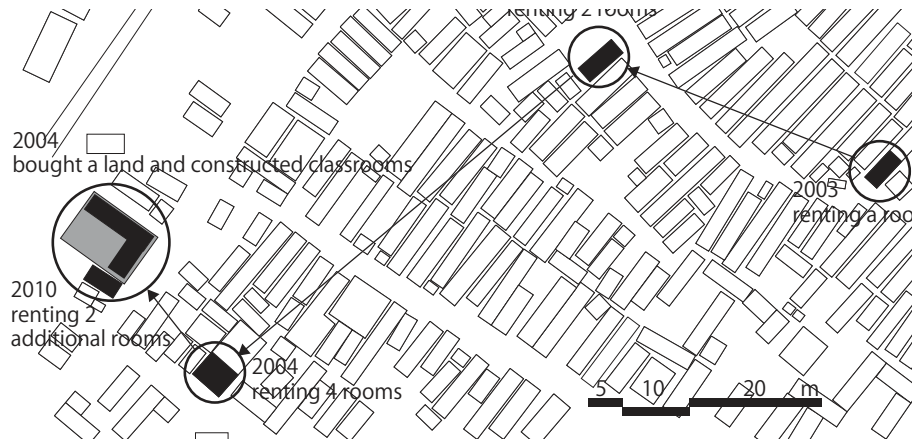


Fig. Moves of Emmanuel Academy

Spatial Environment of Non-formal Schools

Layout of Classrooms

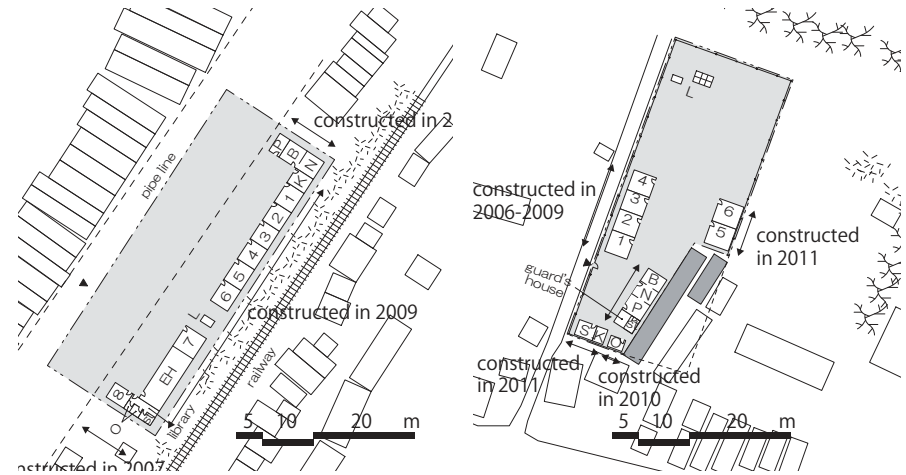


Fig. Layout of classrooms in low density area



Fig. Layout of classrooms in high density area

Spatial Environment of Non-formal Schools

Facilities and Services

■ Size and Material of Classroom

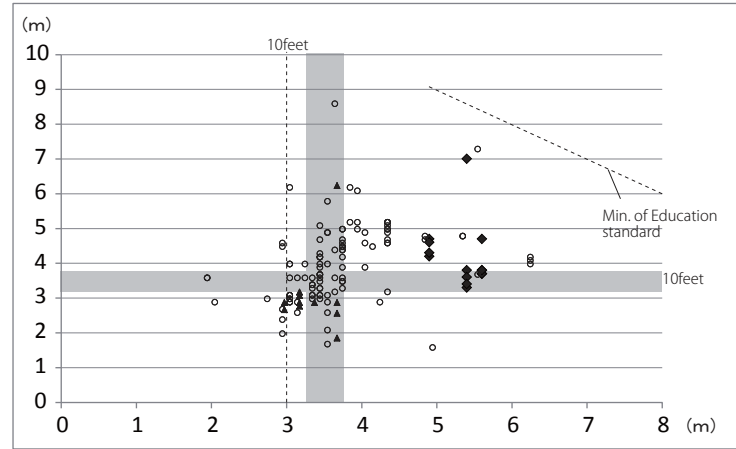


Fig. Size of classrooms

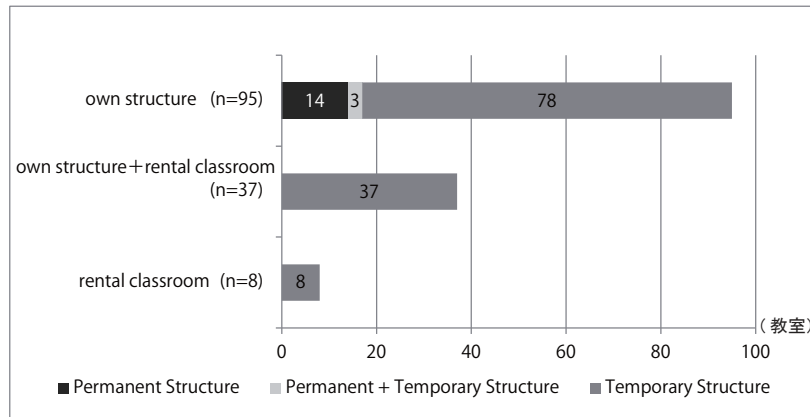
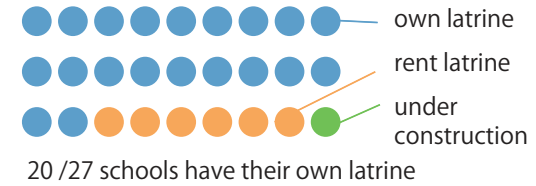


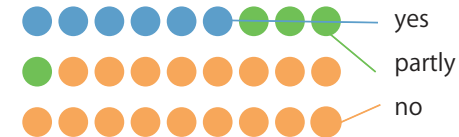
Fig. Material of classrooms

■ Facilities and Services

LATRINES



LUNCH FEEDING PROGRAM



6 /27 schools have full feeding program (mostly under church school), 4 schools have partly

Some schools had before, supported by company in industrial area.

PLAY GROUND



18/27 schools have their own play ground

Most of the school which don't have play ground use Pipe Line area, KPLC ground, Reuben ground etc.

Some Attempts for Improving School Environment

Some Attempts for Improving School Environment

LIGHT AND VENTILATION



HIGH SIDE LIGHT



this type of window is low cost and efficient to get light equally inside the classroom



TOP LIGHT



top light is efficient when classrooms are surrounded by other structures



REFLECTION

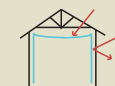


painting wall white is efficient to reflect the light

INSULATION



COVER CEILING



putting cloth, polythin paper or card board is efficient for insulation. Especially covering the ceiling reduce the heat from the roof.



COVER WALL



putting wood on wall is also efficient. This works for insulation and also reducing the sounds.

FLOORS



putting stones or wood on the floor to protect pupils from mud.



Putting carpet for disability children to sit directly on the floor.



Putting concrete block on the floor.

WATER SANITATION



Pupils can drink and wash their hands or legs anytime they want. tap water (left) and tanked water (right)

GREENS

Greens make the environment more beautiful and happy



small green pots are hanging

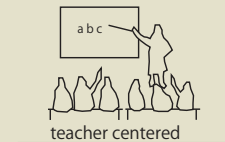


small green garden and a tree as a symbol

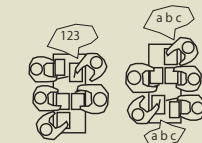


sukuma in bags. Pupils are taking care of these

RAYOUT OF DESKS



teacher centered



pupils sharing



pupils can easily share their works, ideas and opinions. this layout is also saves the space.

MATERIALS & SHELVES & HOOKS



hanging pupils bags. clean than put on floor.



hanging materials for the class



wall painting as a learning material



full of materials including toys

UNDER THE SHADE



pupils want to get out from the classroom. It is nice to have a space under shade.



Under the eaves space act as an office, pupils resting space and eating space during lunch time



It used to be covered by papers. It might be better if greens cover this.



Play ground is covered by a big roof. On weekends, this space changes to church hall.

Spacial Thanks

Muongano Support Trust

Muongano Wa Wanavijiji

Research Assistant: Joseph Mwendo Musioka (Muungano Wa Wanavijiji)

Research Advisor: Irene karanja (Muungano Ssupport Trust)

Research Coodinator: Mukuru School Association

Environmental Settings of Non-formal Schools in Mukuru

© Saori Imoto

Project Researcher, Graduate School of Architecture, Faculty of Engineering, the Univeristy of Tokyo

113-8656, 7-3-1, Hongo, Bunkyo-ward, Tokyo, JAPAN

Te; +81.3.5841.6172

s-imoto27@nifty.com

Published in 2014

Print: Maruboshi Copy Center

